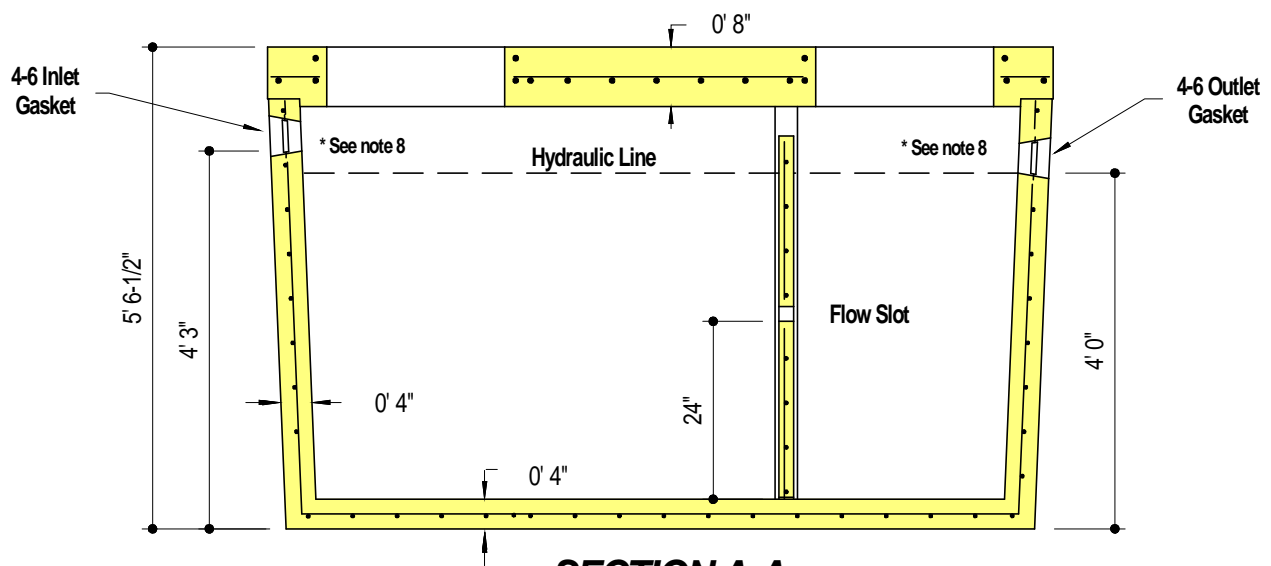


**PLAN VIEW**



**SECTION A-A**

**DESIGN DATA & GENERAL NOTES**

- [1] Concrete strength  $f'c=4,500$  p.s.i. @ 28 days. Density = 150 pcf.
- [2] Cement - Portland Type I/II per ASTM C 150-92.
- [3] Admixtures & plasticizers per ASTM C 260-86 & C 494-92.
- [4] Reinforcing per ASTM A185. Min. 1-1/2" cover.
- [5] Top slab sealed with butyl rope mastic.
- [6] Maximum 5'-0" of earth cover over top slab.
- [7] 4" Walls & Base, 8" Top Slab
- \*[8] Depending on use of tank, Inlet & Outlet baffle may be required by code.

**MBI**  
Mayer Bros., Inc.

6264 Race Road  
Elkridge, Maryland 21075  
Tel. 410.796.1434  
Fax. 410.796.1438  
[www.mayerbrosprecast.com](http://www.mayerbrosprecast.com)

**1,000 GALLON TANK**  
**Heavy-Traffic Rated - H20**

Stock Item [Approx. Wt. - 14,500 lbs.]

Dwg. No. 1000TR2

No Scale

July 2, 2015