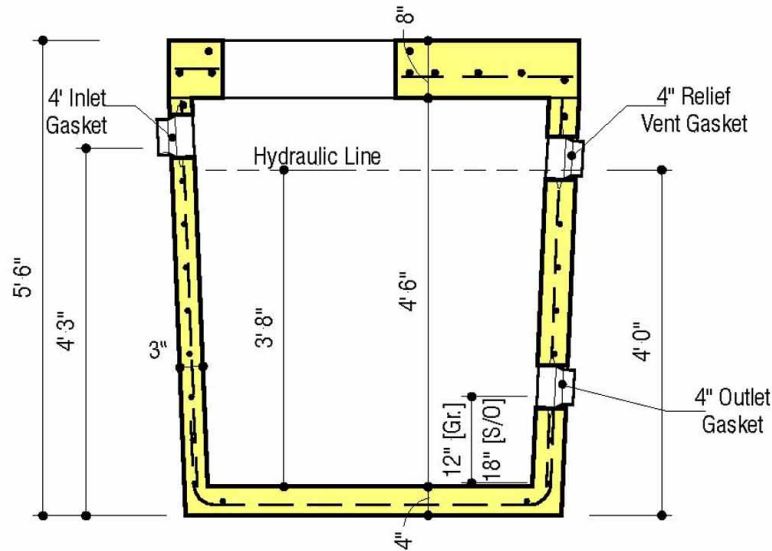


PLAN VIEW



SECTION VIEW

**DESIGN DATA & GENERAL NOTES**

- [1] Concrete strength  $f'_c = 5,000$  p.s.i. @ 28 days. Density = 150 pcf.
- [2] Cement - Portland Type I/II per ASTM C 150-92.
- [3] Admixtures & plasticizers per ASTM C 260-86 & C 494-92.
- [4] Reinforcing per ASTM A615, Grade 60, domestic. Min. 1" cover.  
Walls, base, & top slab designed for HS-20 loading.
- [5] Top slab sealed with butyl rope mastic.
- [6] Maximum 5' of earth cover over top slab.
- [7] Approved by WSSC.

**MBI**

Mayer Bros., Inc.

6264 Race Road  
Elkridge, Maryland 21075  
Tel. 410.796.1434  
Fax. 410.796.1438

[www.mayerbrosprecast.com](http://www.mayerbrosprecast.com)

**WSSC GREASE/SAND/OIL INTERCEPTOR**  
**500 Gallon - Heavy Traffic Rated**

Stock Item [Approx. Wt. - 7,000 lbs.]

Dwg. No. 0500wssc

No Scale

Jan. 1, 2000