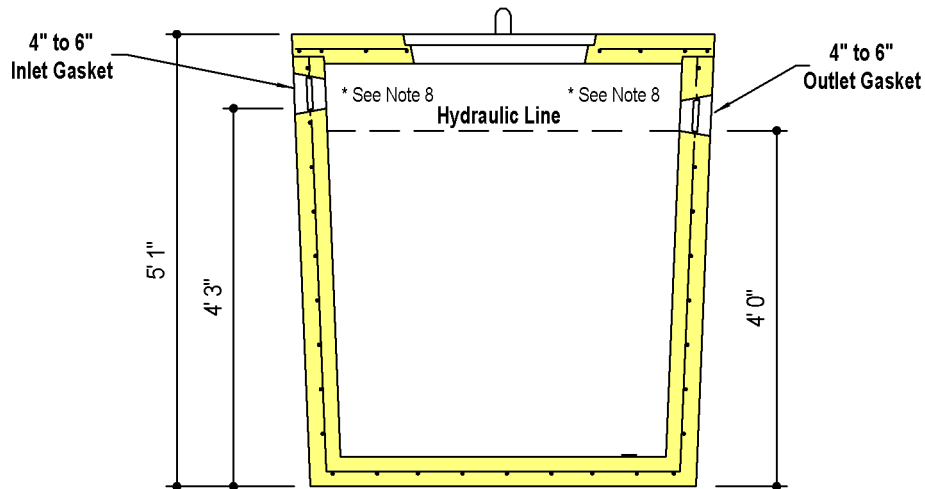


PLAN VIEW



SECTION A-A

DESIGN DATA & GENERAL NOTES

- [1] Concrete strength $f'c=4,000$ p.s.i. @ 28 days. Density = 150 pcf.
- [2] Cement - Portland Type I/II per ASTM C 150-92.
- [3] Admixtures & plasticizers per ASTM C 260-86 & C 494-92.
- [4] Reinforcing per ASTM A185. Min. 1-1/2" cover.
- [5] Top slab sealed with butyl rope mastic.
- [6] 3" wall, 4" base & top thickness.
- [7] Max 3' of cover
- *[8] Depending on use of tank, Inlet & Outlet baffle may be required by code.

WEIGHT = 6,000 lbs.



6264 Race Road
 Elkridge, Maryland 21075
 Tel. 410.796.1434
 Fax. 410.796.1438
 www.mayerbrosprecast.com

**500 GALLON PUMP TANK
 1-Compartment**

Stock Item

Dwg. No. 0500-P

No Scale

Aug 11, 2008