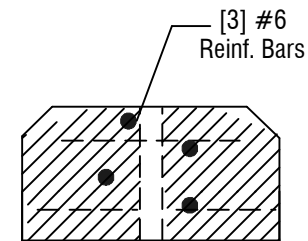
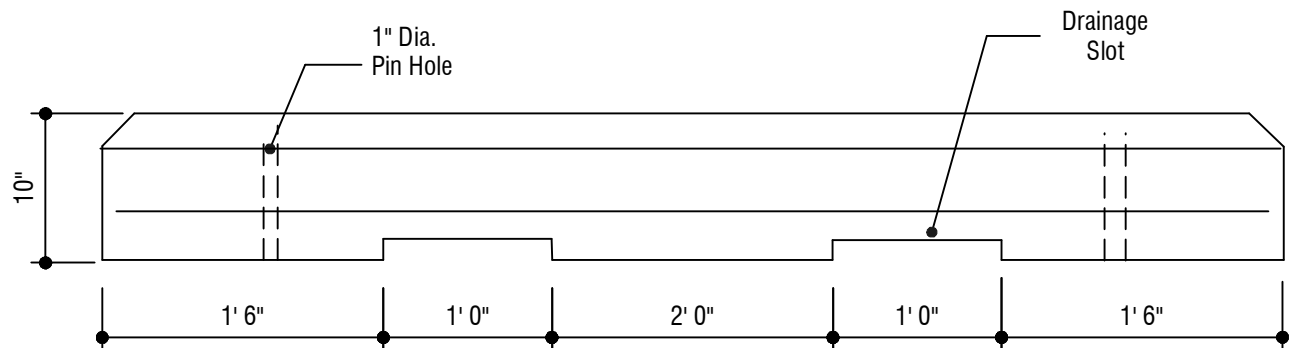


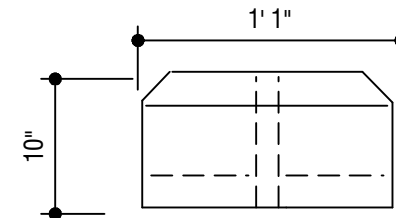
**PLAN VIEW**



**SECTION**



**FRONT ELEVATION**



**SIDE ELEVATION**



Mayer Bros., Inc.

6264 Race Road  
Elkridge, Maryland 21075  
Tel. 410.796.1434  
Fax. 410.796.1438

[www.mayerbrosprecast.com](http://www.mayerbrosprecast.com)

**Heavy Duty Truck Wheelstops  
[7'-0" Long]  
Stock Item**

Dwg.# WS-TRU7

No Scale

Jan. 1, 2000

**DESIGN DATA & GENERAL NOTES**

- [1] Concrete strength  $f_c = 4,500$  p.s.i. @ 28 days. Density = 150 pcf.
- [2] Cement - Portland Type I/II per ASTM C 150-92.
- [3] Admixtures per ASTM C 260-86 & C 494-92.
- [4] Reinforcing per ASTM A615, Grade 60, domestic. Min 1" cover.
- [5] Smooth steel form finish